



Orion  **Proje**



ABOUT US

Orion Design Plan Project Engineering Construction Trade Ltd. was established in Ankara, in 2011.

With its expert staff, our company provides creative solutions about projects concerning transportation structures for public institutions (General Directorate Of Highways and its Regional Directorates, General Directorate Of Turkish State Railways and its Regional Directorates, Municipalities, Provincial Private Administrations) and contracting companies.

- Highway – State Highway Projects
- Projects for Engineering Structures
- Railway Projects
- Tunnel Projects
- Infrastructure Projects
- Consultancy Services

Our company offers services in all these fields, in Turkey and all over the world, under the principle of trust and professionalism.



OUR QUALITY POLICY

At Orion Project the following are the standards that we have adopted while offering the services in the fields of engineering, surveying, project planning and counselling:

Ensuring customer satisfaction by fulfilling the commitments in due time with innovative approaches at global standards, without exceeding the planned budget,

Meeting all the required standards while carrying out the projects and internal corporate processes, R&D and in our construction drawings,

Taking precautions to prevent environmental pollution,

Avoiding potential threats to human health,

Meeting the requirements for occupational health and safety regulations,

Assuming quality and continuous improvement as our main responsibilities in all our fields of activity,

Ensuring the efficiency of quality management system.

OUR VISION

- To produce reliable and high quality projects in Turkey and all over the world
- To accept our customers and human resources as our most valuable assets
- To create value and difference befitting our name and history
- To be the leading company in our field which is universal highly esteemed, offering much more than an ordinary project design company at each and every stage, with all our solution offers taken as a model by our rivals.

OUR MISSION

- To be a company which keeps engineering ethics and quality of service on top of everything with an awareness of social responsibility and ethical values, operating in a sustainable efficiency on world-class.



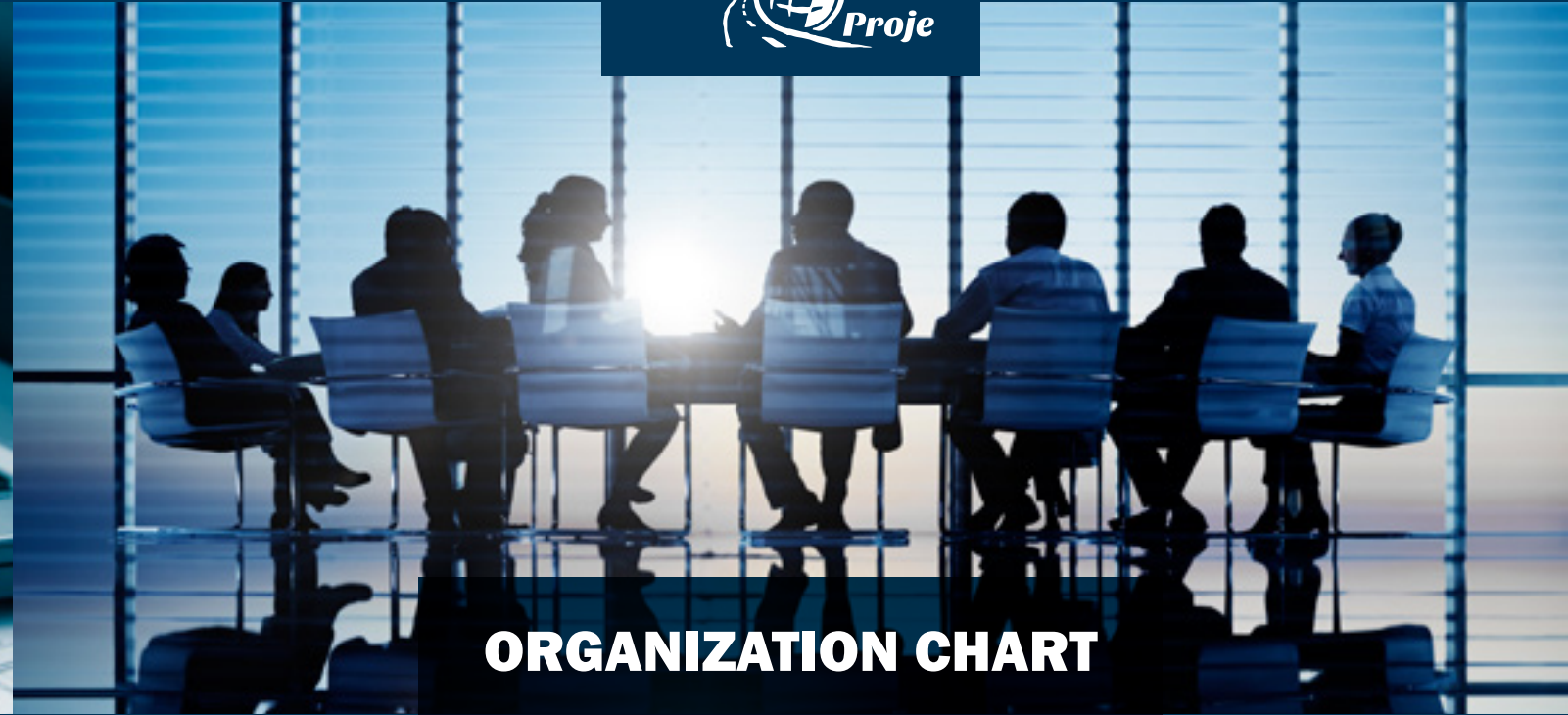
OUR SERVICES

Project Management

- ✓ As-build drawings and calculations of bridges, viaducts, subways, overpasses, culverts, bulkheads, walls and all types of architectural works of art,
- ✓ Project designing and planning of highways, intersections, railways and high-speed rail lines,
- ✓ Transportation and traffic planning and design,
- ✓ Creating optimal designs considering environmental and economic factors,
- ✓ Determination of design criteria,
- ✓ Preparation of technical specifications,
- ✓ Determining the construction method,
- ✓ Design and engineering management,
- ✓ Control of construction drawings,
- ✓ Quantity survey and project cost analysis.

Consultancy Services

- ✓ Selection and evaluation of contractors,
- ✓ Total project construction control,
- ✓ Control of shop drawing and application project,
- ✓ Project cost analysis and budgeting,
- ✓ Cost planning and controlling,
- ✓ Creating and staging of project packages,
- ✓ Tender documentation,
- ✓ Field surveillance,
- ✓ Risk management.



ORGANIZATION CHART

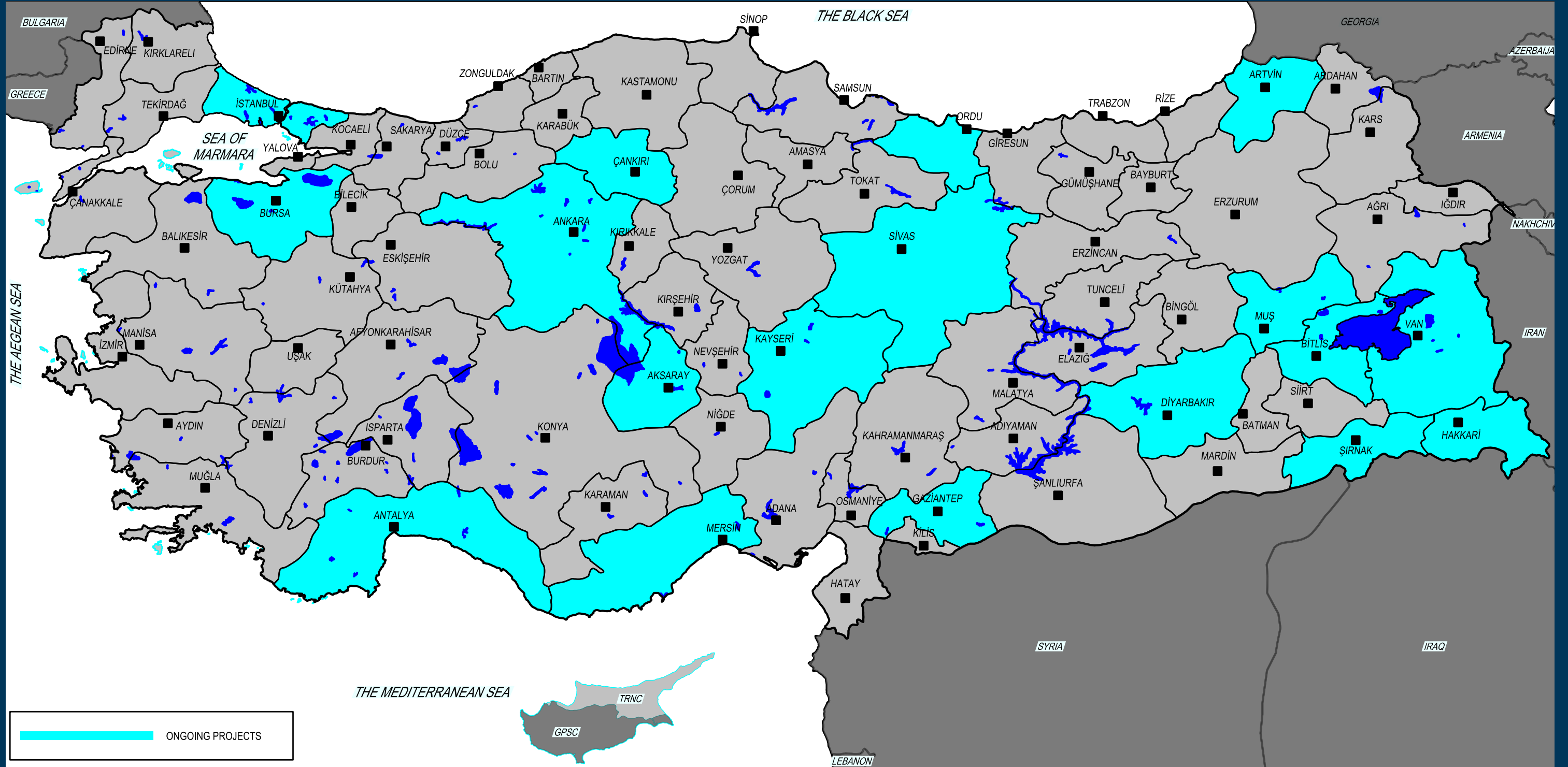


ONGOING PROJECTS

NO	CLIENT	NAME OF JOB	COMPLETION PERCENTAGE
1	General Directorate of Highways, 9th Regional Directorate, Diyarbakır	Uzungeçit Beytüşşebap State Road, Survey, Design and Engineering Services (18 km)	95%
2	General Directorate of Highways	Terme Peripheral Highway, Survey, Design and Engineering Services	95%
3	General Directorate of Highways	(İmranlı - Refaiye) Division - Karacaören Provincial Road Survey, Design and Engineering Services	95%
4	General Directorate of State Hydraulic Works İzmir Regional Directorate	Manisa Akhisar Gürdük Pond, Highway Relocation Engineering Services	95%
5	Doğuş - Gülsan J.V.	Veli Palas Land Slide, Cut & Cover Detail Design	90%
6	Söğüt İnşaat Corp.	Bilkent - İncek Road Survey, Design and Engineering Services	90%
7	General Directorate of Highways, 11th Regional Directorate, Van	Malazgirt City Crossing Road and Bridge Design Engineering Works.	80%
8	Ankara Metropolitan Municipality	Survey, Design and Engineering Services of Motorway Connections for Etimesgut Bağlıca, Mühye Karataş and TRT Campus-Eymir	75%
9	General Directorate of Highways, 11th Regional Directorate, Van	Tatvan Div.. Bitlis-9. Border Road 1 km state Road Design and 2 Bridges Design Engineering Works.	75%
10	General Directorate of Highways, 11th Regional Directorate, Van	Bahçesaray City Crossing Road and Bridge Design Engineering Works.	75%
11	Düzlem Harita Ltd.	Çukurca - Dağlıca Road 0+000-59+935 Part Survey, Design and Engineering Services	60%
12	Prokon Engineering and Consultancy Corp.	Yusufeli Ore Dressing Plant Access Roads	60%
13	Pek-er Construction Ltd.	Silopi - Habur Border Gate Road Survey, Design and Engineering Services	60%
14	General Directorate of Highways, 11th Regional Directorate, Van	Van City Crossing Road and Bridge Design Engineering Works.	50%
15	Farsel - Özmert J.V.	(Çeşmeli Motorway Connection - Koca Hasanlı) State Highway Survey, Design and Engineering Services	50%
16	Düzlem Harita Ltd.	Antalya - Antep Bridge Survey, Design and Engineering Services	50%
17	Feza Contracting Corp.	(Aksaray - Nevşehir) Div. Güzelyurt Road Survey, Design and Engineering Services	50%
18	Nur-Soy - Nehirsu J.V.	Çobanpınar - Yediveren - Esendere Security Roads Survey, Design and Engineering Services	40%
19	RMİ Rönesans Medical Contracting and Construction Corp.	İkitelli Hospital Access Roads Design and Engineering Services	40%
20	General Directorate of Highways	(Şemdinli-Alan) Div. Derecik Provincial Roads Survey, Design and Engineering Services	20%
21	SU-YAPI Engineering and Consulting Corp.	Özbağ Bridge Design Engineering Services	10%

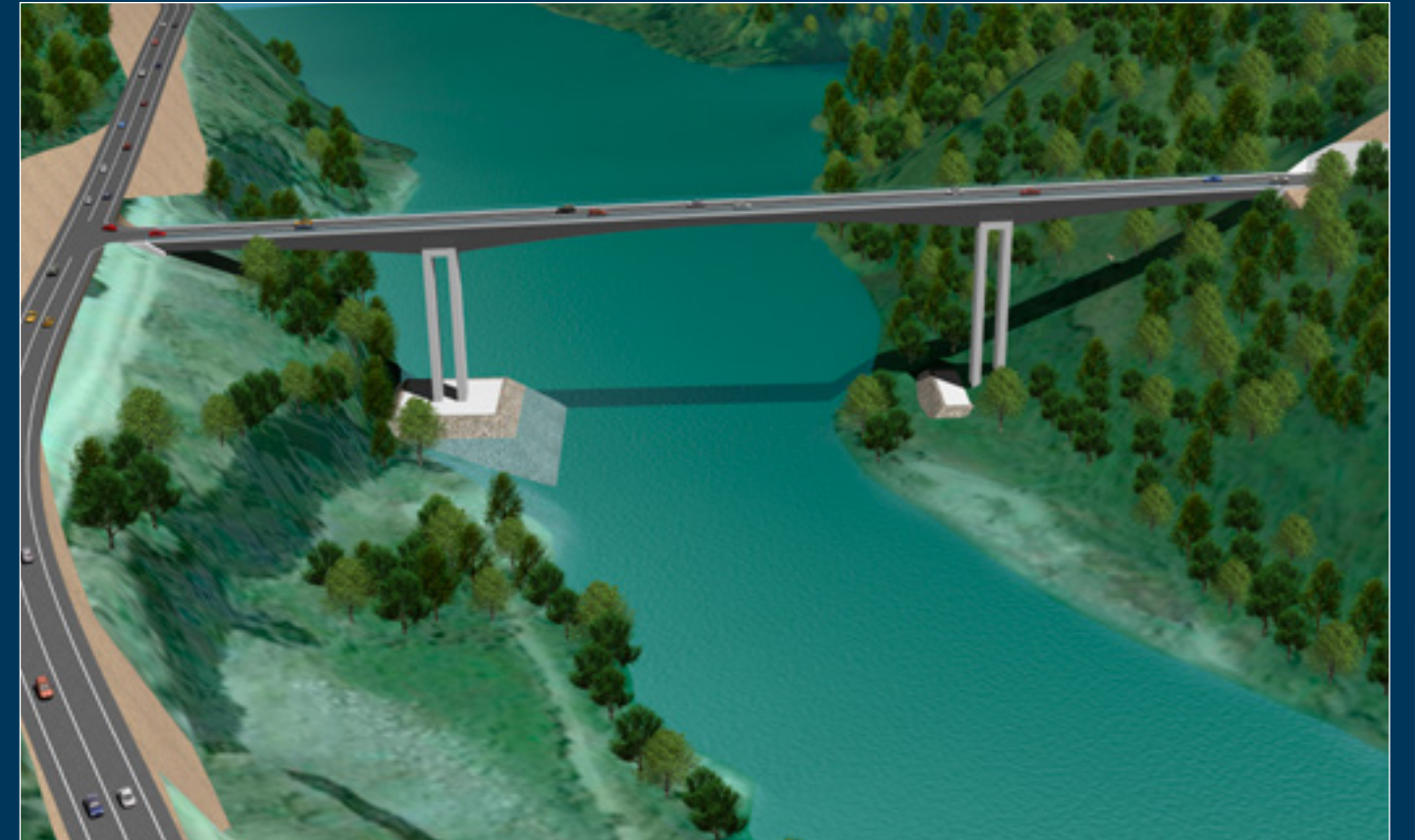
ONGOING PROJECTS

ONGOING PROJECTS



COMPLETED PROJECTS

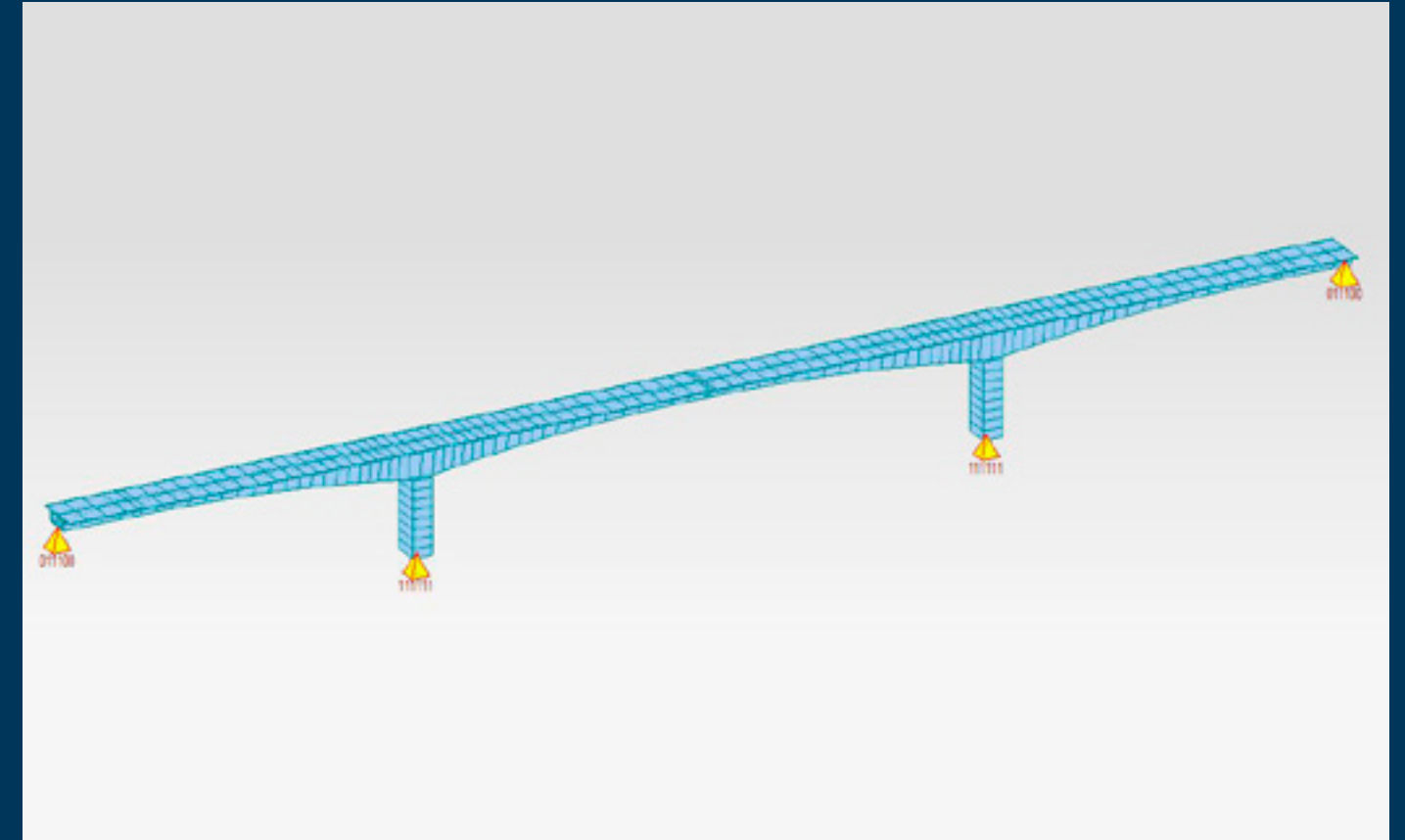
Name:	Güreşen Bridge Detailed Design Works
Client:	Artvin Provincial Directorate
Construction Method:	Balanced Cantilever Bridge
	Bridge is located in Artvin/Borçka. It has been planned on the connection road between State Highway and provincial roads which are disconnected by Muratlı Dam Reservoir. Span lengths are 67.5 m +135.0m +67.5 m and total length of the bridge is 270 m. Design of the bridge was done according to basis for in-situ balanced cantilever bridge construction. Piers are located inside of reservoir and deep water soil investigation was completed. Design of the bridge was done according to Turkish Bridge Standards and AASHTO LRFD 2012. Bearings were selected as pot bearings as the bridge is not located at a seismically active zone.



COMPLETED PROJECTS

Name:	Tohma Bridge Detailed Design Works
Client:	General Directorate of Highways
Construction Method:	Incrementally Launched Steel Composite Bridge
	Bridge is located on Malatya – Sivas State Highway on the river Tohma which is joined with Karakaya Dam reservoir. Maximum span length is 69.0 m with a total length of 527 m. Design of the bridge is done according to basis for incrementally launched steel composite bridge construction. Design of the bridge was completed according to Turkish Bridge Standards, Eurocode and AASHTO LRFD 2012. Since bridge is located in a seismically active zone, viscous dampers were designed for both ends at abutments.

Name:	Karababa Bridge Detailed Design Works
Client:	Artvin Provincial Directorate
Construction Method:	Balanced Cantilever Bridge
	Bridge is located on Şanlıurfa – Adıyaman State Highway where it crosses The River Euphrates. Span lengths are 110 m +175.0m +110 m and total length of the bridge is 395 m. Design of the bridge was done according to basis for in-situ balanced cantilever bridge construction. There was two 15.0 m width bridge platforms. Design of the bridge was completed according to Turkish Bridge Standards and AASHTO LRFD 2012.



COMPLETED PROJECTS

Name:	Hacettepe University Interchange
Client:	Dia Sağlık Yatırımları A.Ş.
Main Client:	Ankara Metropolitan Municipality
Construction Method:	In-situ Posttensioned Box Girder Bridge
	Detail design of multilevel intersection, two overpasses in the scope of Ankara Metropol City Hospital connection roads. Maximum Span length of overpass is 60.0 m with a total length of 355 m. Bridge superstructure system is selected as in-situ voided slab posttensioned bridge. Superstructure is connected to substructure with elastomeric bearings at critical piers in consideration of seismic conditions. Design of the bridge is completed according to Turkish Bridge Standards and AASHTO LRFD 2012.

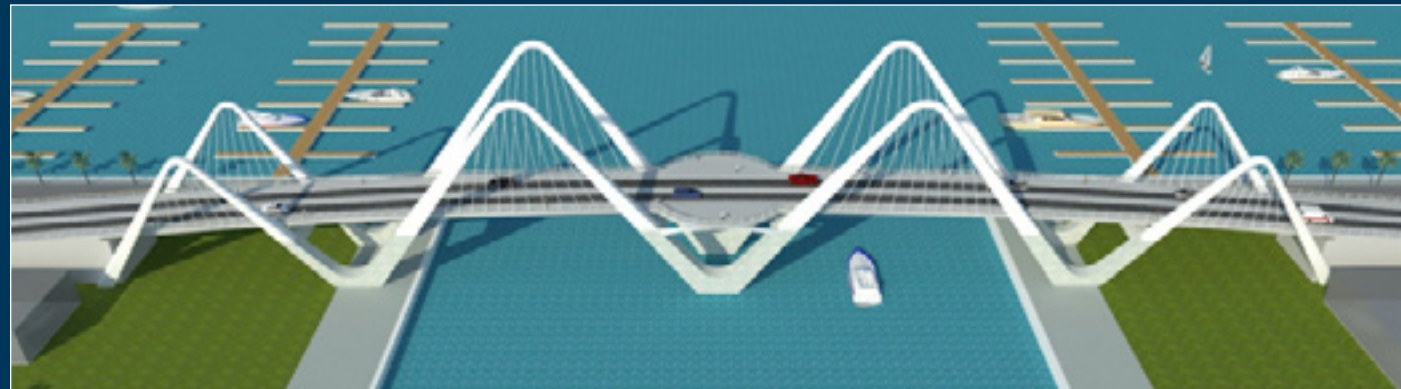
Name:	METU Teknokent Interchange
Client:	Dia Sağlık Yatırımları A.Ş.
Main Client:	Ankara Metropolitan Municipality
Construction Method:	In-situ Posttensioned Voided Slab Bridge
	Detail design of multilevel intersection, two overpasses and one underpass in the scope of Ankara Metropole City Hospital connection roads. Maximum Span length of overpasses is 35.0 m. Longest one's total length is 259 m. The other one which is on plan curve is 192 m total length. Bridge superstructure system is selected as in-situ voided slab posttensioned bridge. Superstructure is connected to substructure with elastomeric bearings at critical piers in consideration of seismic conditions. Design of the bridge was completed according to Turkish Bridge Standards and AASHTO LRFD 2012.



COMPLETED PROJECTS

Name:	Maldives Bridge 1 to 6 Detail Designs
Client:	Tümaş Engineering
Main Client:	Ankara Metropolitan Municipality
Construction Method:	In-situ Posttensioned Voided Slab Bridge and Box Girder Bridge
	Detail design of 5 bridges between Phase 1 – Phase 2 on Hulhumale Island. Bridges superstructure system is designed as in-situ posttensioned voided slab. Bridge 1-5 is single span bridge with a span length of 52 m. Bridge 6 is located on road of Harbour 1. It was designed as posttensioned box girder bridge with span lengths of 85m-70m-60m. Superstructure is connected to substructure with elastomeric bearings for the first 5 bridges and Pot Bearing for the Bridge-6. Design of the bridge is completed according to Eurocode Provisions.

Name:	Adapazarı - Istanbul High Speed Railway Line
Client:	SWS Engineering
Construction Method:	Turkish State Railways
	110 km high speed railway line. Including geometrical studies, drainage studies and earthwork analysis. Also completion of structures including 14 cut and cover tunnels (total length 1.5 km), 10 underpasses, 1 overpass, 56 culverts and 24 viaducts (total length 9.6 km)



COMPLETED PROJECTS

Name:	Akcakale Ceylanpınarı State Highway
Client:	General Directorate of Highways - 9th District Directorate
	105 km state highway. Design, survey and engineering studies, including geometrical studies, drainage studies, earthwork analysis, soil investigation reports, traffic studies. Also completion of structures including 184 culverts .



Name:	Terme Ring Road
Client:	General Directorate of Highways
	12.5 km state highway with 2x2 lanes. Design, survey and engineering studies, including geometrical studies, drainage studies, earthwork analysis, soil investigation reports, traffic studies. Also completion of structures including 5 multi-level intersections, 4 bridges, 5 underpasses and 28 culverts.



Name:	Diyarbakır – Mardin State Highway
Client:	General Directorate of Highways - 9th District Directorate
	35 km state highway with 2x2 lanes. Design, survey and engineering studies, including geometrical studies, drainage studies, earthwork analysis, soil investigation reports, traffic studies. Also completion of structures including 1 multi-level intersection, 11 level crossings, 3 side roads and 84 culverts.



COMPLETED PROJECTS

Name:	Elazığ and İkitelli City Hospitals Campus roads
Client:	Renaissance Holding
	Design and engineering studies, including geometrical studies, drainage studies, earthwork analysis, soil investigation reports and traffic studies for the campus roads.



NO	CLIENT	NAME OF JOB	COMPLETION DATE
1	Turkish State Railways Ankara Reg. Dir.	15 Underpasses - Overpasses Detail Design	01.05.2018
2	SU-YAPI Engineering and Consultancy Inc.	Çetmi Viaduct Detail Design (BALANCED CANTILEVER)	17.04.2018
3	RMİ Rönesans Medikal Undr. Cons. Inc.	Elazığ Hospital Transportation Structures Detail Design	15.03.2018
4	Apron Project Eng. Consulting Cons. Trade Co. Ltd.	Menemen - Aliğa - Çandarlı Highway Bridges Detail Design	01.02.2018
5	Egecan Gas Station - Vestan Cons.	Başköy Dam Relocation Road Detail Design	29.01.2018
6	Tümaş Turkish Engineering Consulting and Constructing Inc.	Maldives 6 Bridges Detail Design	15.01.2018
7	General Directorate of Highways, 8th Reg. Dir. Elazığ	Maden District İstasyon Bridge Detail Design	28.11.2017
8	Çankırı Municipality	University Transportation Road Detail Design	15.11.2017
9	Ankara Metropolitan Municipality	Karapürçek Settlement Highway Intersection Detail Design	16.10.2017
10	Yertaş Cons. - Farsel Cons. Joint Venture	Silifke City Crossing Detail Design	12.09.2017
11	Ankara Metropolitan Municipality	Konya Yolu - Dikmen Intersection and Akköprü Bridge Crossing Detail Design	10.09.2017
12	Çankırı Municipality	Esentepe Settlement Link Road Detail Design	22.08.2017
13	İntekar Construction Co. Ltd.	Silopi Ring Road Bridge Crossing Detail Design As Built	27.07.2017
14	Nuran Demirtaş Architecture	Transportation Structures Detail Design within Hasankeyf Monuments Transportation and Protection Project	27.07.2017
15	Antalya Metropolitan Municipality	Altınova Alternative Road and Bridge Detail Design	15.05.2017
16	General Directorate of Highways	Tatvan - Karşıyaka Grade Separated Junction and Link Roads Pro. Consultancy Services	02.05.2017
17	Isparta Provincial Administrations	Melikler Bridge Construction Consultancy	30.04.2017
18	Özka Construction	Akçaova Bridge Detail Design	23.01.2017
19	CCN Holding	Ankara Bilkent City Hospital Transportation Structures	05.01.2017
20	General Directorate of Highways, 5th Reg. Dir. Mersin	Mizar Bridge Detail Design	22.12.2016
21	Uluova Cons. Mac. Ind. Co. Ltd.	Muratdağı Pond Relocation Road Detail Design	13.12.2016
22	Som Project Engineering Co. Ltd.	Devlitti Baba ve Mezar River Viaduct Detail Design	13.12.2016
23	General Directorate of Highways, 5th Reg. Dir. Mersin	Aksu-1 Bridge Detail Design	07.12.2016
24	Ankara Metropolitan Municipality	5 Intersection Detail Design	15.11.2016
25	General Directorate of Highways, 3rd Reg. Dir. Konya	Aksaray - Ortaköy - 6th Reg. Brdr. State Highway Relocation Project	10.11.2016

COMPLETED PROJECTS



NO	CLIENT	NAME OF JOB	COMPLETION DATE
26	General Directorate of State Hydraulic Works 15th Reg. Dir.	Kozcağız - Kumluca Relocation Road Detail Design	26.10.2016
27	General Directorate of Highways, 5th Reg. Dir. Mersin	Zorkun River Bridge Detail Design	18.10.2016
28	General Directorate of Highways, 5th Reg. Dir. Mersin	Aksu - 2 Bridge Detail Design	18.10.2016
29	BSK Road. Cons. Co. Ltd.	Akçakale - Ceylanpınar Provincial Relocation Road Detail Design	01.09.2016
30	Artvin Provincial Administration	Artvin - Borçka District Güreşen Bridge Detail Design (BALANCED CANTILEVER)	24.08.2016
31	Deha Construction Inc.	Gülner - Aydıncık Provincial Road Protected Area Relocation Roads Detail Design	01.08.2016
32	Enka Cons. Inc.	Georgia - South Caucasian Oil Pipeline Pump Stations Construction Drawings	01.07.2016
33	UBM Consultancy Services Inc.	Tohma Bridge Detail Design (STEEL - INCREMENTAL LAUNCHING)	21.06.2016
34	General Directorate of Highways, 9th Reg. Dir. Diyarbakır	Aksu Village Bridge Crossing Detail Design	27.05.2016
35	UBM Inc. - Som Project Joint Venture	Susurluk River Bridge Detail Design	20.05.2016
36	CCN Holding	Ankara Bilkent City Hospital Inner Roads Detail Design	01.04.2016
37	Turkish State Railways İzmir Reg. Dir.	14 Underpasses - Overpasses Detail Design	01.04.2016
38	Deha Construction Inc.	Mut - Ermenek State Highway Detail Design	18.03.2016
39	Atataş Construction-Özmert Construction	Asi Bridge Flood Preventing Structure Detail Design	15.03.2016
40	DİA Infrastructural Investments Inc.	Bilkent Hospital Center Road Detail Design	25.02.2016
41	Mehmet Ergün Engineering	Karaman Freight Village Railway and Bridge Detail Design	15.01.2016
42	Ataç Engineering and Consultancy Co. Ltd.	Çay - Bolvadin State Highway Bridges	10.12.2015
43	Ahmet Üstekıdağ	Special Forces Command Roads' Repairing Projects	23.12.2015
44	AKM Construction	Bartın - Safranbolu Road and Bridges Detail Design	19.12.2015
45	Kırşehir Municipality	Rainwater Construction Drawings	11.12.2015
46	Kırşehir Municipality	Waste Water Construction Drawings	07.12.2015
47	Özmert Construction Co. Ltd.	Erdemli - Silifke - Taşucu State Highway Detail Design (50 km)	01.12.2015
48	Antalya Metropolitan Municipality	Düden - Sakrya Intersections Bridge and Road Detail Design	06.11.2015
49	Ataç Engineering and Consultancy Co. Ltd.	Yusufeli Dam Relocation Road Viaducts	15.09.2015
50	General Directorate of Highways, 9th Reg. Dir. Diyarbakır	Şırnak - Hakkari (Ortasu-Ortaköy) State Highway Detail Design (20 km)	04.09.2015

NO	CLIENT	NAME OF JOB	COMPLETION DATE
51	Tekta Cons. In. and Trade Inc.	Elmadağ Pass High Speed Railway Viaducts Detailed Design	10.08.2015
52	Ataç Engineering and Consultancy Co. Ltd.	Yusufeli Dam Relocation Road Bridges and Viaducts Detail Design	29.07.2015
53	General Directorate of Highways, 9th Reg. Dir. Diyarbakır	Ortasu - Ortaköy Provincial Road Detail Design	25.07.2015
54	Tekta Cons. In. and Trade Inc.	Ankara-Kırıkkale High Speed Railway Project - Elmadağ Pass - V9 Viaduct	15.07.2015
55	Çaycuma Municipality	Underpass Projects	13.07.2015
56	SWS Engineering S.p.A.	Adapazarı - İstanbul High Speed Railway Detail Design	15.06.2015
57	Som Project Engineering Co. Ltd.	Saçırsuyu Bridge Detail Design	26.05.2015
58	Yapıyol Construction Co.	General Directorate of State Hydraulic Works Kumluca - Kozcağız Temporary Road Detail Design	18.05.2015
59	Yapıyol Construction Co.	General Directorate of State Hydraulic Works Kozcağız Dam Relocation Roads Detail Design	12.05.2015
60	Kırşehir Municipality	Kılıçözü River Bridge and Road Detail Design	05.05.2015
61	Ankara Construction Trade.	Kırşehir - Kayseri State Highway Detail Design (9 km)	15.01.2015
62	Sivas Provincial Administration	Ekinli Bridge Detail Design	15.01.2015
63	Turkish State Railways Ankara Reg. Dir.	Yeni Fakılı Underpass Detail Design	10.01.2015
64	Deha Construction Inc.	Mut River Bridge Detail Design	26.12.2014
65	Isparta Provincial Administration	Melikler Bridge Detail Design	25.12.2014
66	Özmert Cons. Co. Ltd.	Asi Bridge Detail Design	25.12.2014
67	Som Project Engineering Co. Ltd.	Bridge Detail Design Works in Gaziantep - Nizip - Birecik State Highway	20.12.2014
68	General Directorate of Highways, 9th Reg. Dir. Diyarbakır	Diyarbakır Mardin Dist. Sürgücü State Highway Survey, Design and Engineering Services (18 km)	01.12.2014
69	MSM Inc. - ÖSAK Inc. Joint Venture	Diyarbakır - Mardin State Highway Survey, Design and Engineering Services	02.10.2014
70	Enka Cons. Inc.	Culvert Detail Design	26.09.2014
71	SWS Engineering S.p.A.	Murşitpınar - Şanlıurfa Two Lines Railway Detail Design (30 km)	29.08.2014
72	Eptisa Engineering Co. Ltd.	Befesa Factory Foundation Capacity Design Report	11.08.2014
73	Pervari Electricity Generation Inc.	Various Road Designs	01.07.2014
74	Deha Construction Inc.	Batman - Kozluk State Highway Survey, Design and Engineering Services	26.06.2014
75	Ataç Engineering and Consultancy Co. Ltd.	Gümüşakar Bridge Detail Design	04.06.2014

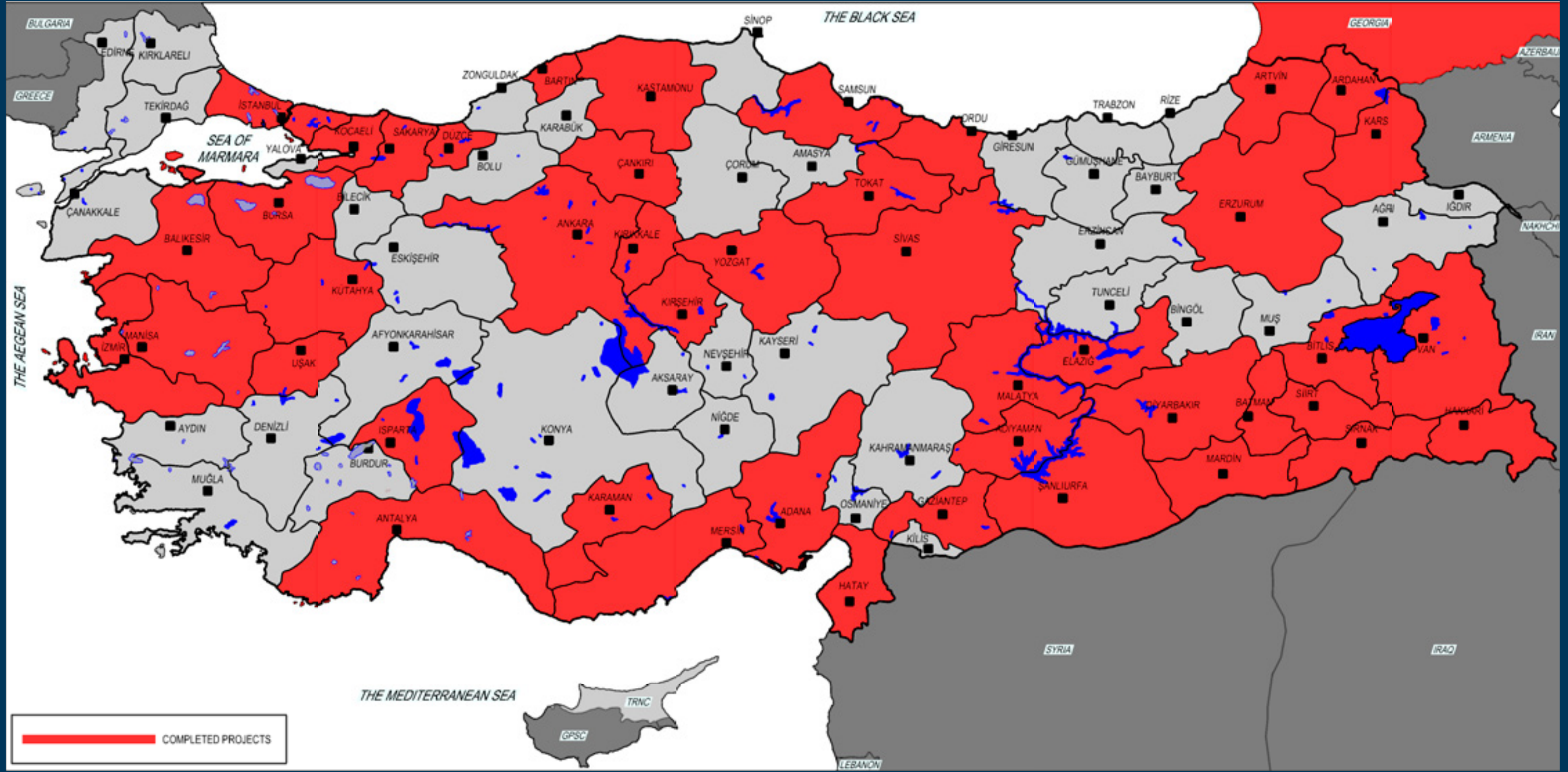
COMPLETED PROJECTS



NO	CLIENT	NAME OF JOB	COMPLETION DATE
76	Atlas Construction Co. Ltd.	State Railways Underpass Detail Design	01.06.2014
77	Ataç Engineering and Consultancy Co. Ltd.	Çekerek 1 - 2 - 3 Bridges Detail Design	02.05.2014
78	SWS Engineering S.p.A.	Sivas - Erzincan High Speed Railway Project Phase 1	07.04.2014
79	SWS Engineering S.p.A.	Uşak - Salihli Railway Survey, Design and Engineering Services	02.04.2014
80	KMG Project Co. Ltd.	Amasra Bridge Structural Analysis	27.03.2014
81	Pervari Electricity Generation Inc.	Beğendik Road Detail Design	18.03.2014
82	İntekar Construction Co. Ltd.	Silopi Ring Road Crossover Road Detail Design	10.03.2014
83	Atlas Construction Co. Ltd.	Payas Municipality Railway Underpass Detail Design	05.03.2014
84	BSK Road. Cons. Co. Ltd.	Akçakale Ceylanpınar Provincial Road Revised Detail Design	24.01.2014
85	Durmaz Construction Co. Ltd.	Diyarbakır - Ergani State Highway Survey, Design and Engineering Services	31.12.2013
86	Ankara Construction Co. Ltd.	Various Detail Design Works Under Kırşehir City Crossing	31.12.2013
87	Ataç Engineering and Consultancy Co. Ltd.	Tokat Ring Road Bağlar Bridge Detail Design	23.12.2013
88	Pervari Electricity Generation Inc.	Pervari Hydraulic Power Plant's Access Roads and Relocation Road Design	29.11.2013
89	Öz Aras Group Inc.	Transportation Projects Consultancy Services	29.11.2013
90	BSK Road. Cons. Co. Ltd.	Botan River Bridge Detail Design	29.11.2013
91	4E Project Co. Ltd.	Gökkoy Logistics Village Overpass Detail Design	25.11.2013
92	Deha Construction Inc.	Silifke - Mut Dist. Gülnar Provincial Road Underpass and Culvert Detail Design	25.11.2013
93	BSK Road. Cons. Co. Ltd.	Ceylanpınarı Ring Road (8 km) Detail Design	04.10.2013
94	KMG Project Co. Ltd.	Bridge Detail Design	25.09.2013
95	ZTM Engineering Co. Ltd.	Huzur Park Intersection Detail Design	24.09.2013
96	Som Project Engineering Co. Ltd.	Bartın Ring Road Şehitlik Bridge Construction Drawings	23.09.2013
97	General Directorate of Highways, 9th Reg. Dir. Diyarbakır	Akçakale Ceylanpınar Provincial Road (105 km) Design and Engineering Services Phase 2	12.08.2013
98	İskenderun Municipality	2 Bridges Detail Design	31.07.2013
99	Ataç Engineering and Consultancy Co. Ltd.	Tokat Ring Road Shoring Piles' Detail Design	20.06.2013
100	Ankara Construction Co. Ltd.	Transportation Projects Consultancy	17.06.2013

NO	CLIENT	NAME OF JOB	COMPLETION DATE
101	Hacettepe University	Directorate of Construction and Technical Works New Building Detail Design	03.06.2013
102	MSM Inc. - ÖSAK Inc. Joint Venture	Mardin Diyarbakır State Highway Bridge Detail Design	10.05.2013
103	Elit Tourism Co. Ltd.	Anatolia Wonderland Foundation Detail Design	02.05.2013
104	Ataç Engineering and Consultancy Co. Ltd.	Tokat Ring Road Landslide Prevention Detail Design	24.04.2013
105	ZTM Engineering Co. Ltd.	Bedišan Bridge Construction Drawings	03.04.2013
106	FDN Cons. Tourism Inv. Inc.	Hayrat Bridge Revised Detail Design	14.03.2013
107	General Directorate of Highways, 8th Reg. Dir. Elazığ.	(Kahta-Sincik) Dist. - Damlacık (Adıyaman - Narince) Dist. Province Road (23 km)	26.12.2012
108	ZTM Engineering Co. Ltd.	Uşak Municipality Huzur Park Intersection and Bridge Construction Drawings	25.12.2012
109	ZTM Engineering Co. Ltd.	İnebolu Bridge Construction Drawings	25.12.2012
110	ZTM Engineering Co. Ltd.	Karadere Bridge and Yeniköy Bridge Construction Drawings	25.12.2012
111	General Directorate of Highways, 10th Reg. Dir. - Trabzon	(Espiye-Çarşıbaşı) Dist.- Çanakçı Ring Road - Karabörk Highway (9.6 km) Survey, Design and Engineering Services	22.12.2012
112	General Directorate of Highways, 18th Reg. Dir. - Kars	(Kağızman - Tuzluca) Dist. - Kağızman State Highway Survey, Design and Engineering Services	12.12.2012
113	General Directorate of Highways, 18th Reg. Dir. - Kars	Arpaçay - Doğruyol Road Survey and Engineering Services	12.12.2012
114	Lava Engineering Co. Ltd.	Kışladağ Gold Quarry Village Road and Bridge Detail Design	29.11.2012
115	Lava Engineering Co. Ltd.	Kırşehir State Hospital Intersection and Underpass Detail Design	29.11.2012
116	Tekta Cons. In. and Trade Inc.	DSİ(General Directorate of State Hydraulic Works) Channel Bridge Detail Design	02.11.2012
117	ZTM Engineering Co. Ltd.	İğdir and Diphan Bridges Detail Design	19.10.2012
118	Som Project Engineering Co. Ltd.	Erdemli - Silifke - Taşucu State Highway Various Design Works	31.08.2012
119	Bilir Cons. Trade Tourism and Ind. Comp. Ltd.	RTE Av. Railway Overpass Detail Design	01.08.2012
120	Mapa Construction and Trade Inc.	Düzce Ring Road 8.0x5.0 Underpass Detail Design	01.08.2012
121	Kırşehir Municipality	Campus Construction Detail Design in General Directorate of Highways, Kırşehir, 61st Division	15.05.2012
122	Mapa Construction and Trade Inc.	Düzce Ring Road 9.0x5.0 Underpass Detail Design	14.05.2012
123	Mapa Construction and Trade Inc.	Road and Intersection Detail Design	03.05.2012
124	Som Project Engineering Co. Ltd.	Various Intersection Detail Design Projects in General Directorate of Highways, 8th Reg. Dir. Elazığ	27.12.2011
125	Kırşehir Municipality	AEÜ State Hospital Intersection Underpass Project	09.08.2011

COMPLETED PROJECTS



CERTIFICATE

Quality Management System as per TS EN ISO 9001:2015

In accordance with BBS Belgelendirme Eğitim ve Gözetim Hizmetleri A.Ş. procedures, it is hereby certified that



ORİON TASARIM PLAN PROJE MÜH. İNŞAAT TİC. LTD. ŞTİ.

**Ankara Teknopark TGB Yerleşkesi 2224. Cad. No:1 C Blok Kat:6
No: C-617/618 Yenimahalle/ANKARA**

applies a management system in line with the above standard for the following scope

Infrastructure and superstructure survey, project, engineering and consultancy services.

Certificate No: T-191-01

Initial Certification 17.11.2015
Valid until 16.11.2018

Certification Body
at BBS A.Ş.

Ankara, 17.11.2015

This certification was conducted in accordance with BBS A.Ş. auditing and certification procedures and is subject to regular surveillance audits.

BBS BELGELENDİRME EĞİTİM VE GÖZETİM HİZMETLERİ A.Ş.
Kabil Caddesi 1328 Sokak No:8/9
TR-06460 ÇANKAYA / ANKARA
www.bbsas.com.tr





ORION TASARIM Plan Proje Müh. İnş. Tic. Ltd. Şti.

Ankara Teknopark TGB Yerleşkesi 2224. Cad. No:1 C Blok

Kat:6 No:C-617/618 Yenimahalle / ANKARA

Tel : +90 312 473 99 40

Faks : +90 312 473 99 94

T. Sicil No: 294194

bilgi@orionproje.com

www.orionproje.com